

Geneglance F600 (x3) ice plant

Specifications

Brand	Geneglance
Type	F600 (x3) ice plant
Capacity	42.000 kg/24hr
Refrigerant	Freon (R449a)
Remarks	Y.o.b. 2015
Stock	1



Description

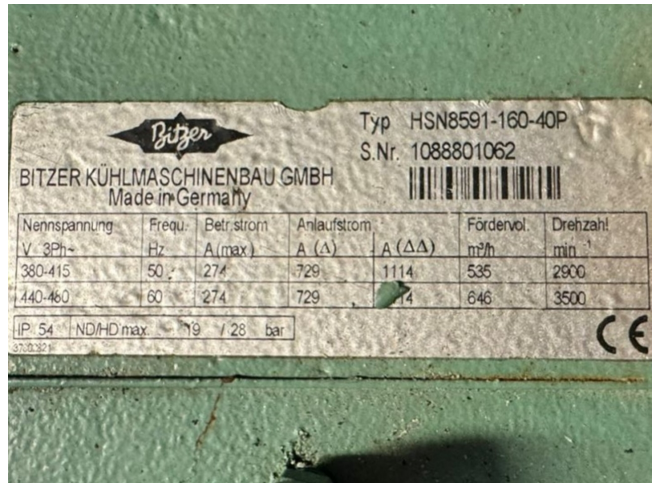
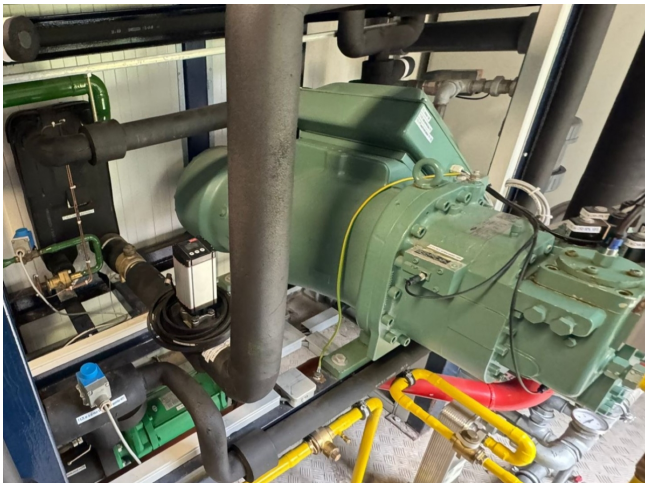
Used Geneglance F600 (x3) ice plant

Well maintained Geneglance F600 (x3) complete flake ice plant on Freon R449a installed in one container. This flake ice set comes with a Bitzer HSN8591-160-40P screw compressor with a brazed heat exchanger as economizer, 1 GEA F600 SBF water-cooled condenser, oil cooler as evaporator, 3 Geneglance ice makers, Hermetic CNF 32-160 liquid pump and a Provides oil separator. Further the set comes with a KTI CSP-100-50 Hz - R449a-ct-GG control cabinet and control panel.

Each Geneglance F600 unit makes between 10.000 and 14.000 kg/24h of flake ice out of fresh water. Please feel free to contact us for more information!



*Why choose for HOSBV? We're not only the largest used refrigeration specialist in Europe, but also, we deliver all equipment including an extensive test, warranty and industrial cleaning. *If requested we are happy to arrange your logistics.



GEA Refrigeration France s.a.s.
Technology Centre Ice Machines

9, rue des Orfèvres
44840 Les Sorinières - France
+33(0)2 51 19 10 51

Type / Model	F600 SBF	
N° Série construction Construction serial number	151345 F600	
Année de fabrication Manufacturing year	2015	Fluide Fluid R404A
Pressions mini/maxi admissibles (PS) Minimaxi allowable pressures	-1 / +18,5	Bar
Températures mini/maxi admiss. (TS) Minimaxi allowable temperatures	-30 / +45	°C
Pression d'épreuve (PT) / Test pressure	20,4	Bar
Date d'épreuve / Test pressure date	25/09/2015	
Groupe de fluide / Fluid group	2	
Charge fluide maxi / Maxi refriger. charge	40	Kg
Tension - Phase(s) / Voltage - Phase(s)	400 V-3+N+T	Ph.
Fréquence / Frequency	50	Hz
Puissance installée / Installed power	0,9	kVA
Intensité maxi / Maxi amperage	2,0	A

ENR-TRA-014 vD



